



**Lissett**  
Homes

# THE GULLWING

[lissetthomes.com](http://lissetthomes.com)



**With its revolutionary roof, the Gullwing provides a stylish, contemporary space that is the first of its kind. Its unique design creates a home bathed in natural light, creating a bright, airy space, whether you are relaxing with family, or hosting friends.**

Sleek exterior cladding and external LED strip lighting is perfectly complemented by stunning interior styling and sumptuous designer furnishings, fixtures and fittings. State-of-the-art technology features throughout, from WiFi-enabled coffee machines and taps that produce boiling water instantly, to voice-controlled blinds and lighting.

Scenic views are brought into the open-plan living space with large bifold doors, bringing the outdoors in during the summer months. In contrast, underfloor heating, double glazing and full insulation give the Gullwing warmth and comfort throughout the year.

Cutting-edge materials, precision engineering techniques and extensive construction expertise, mean each Gullwing is built to far exceed the British Residential standard of BS3632.



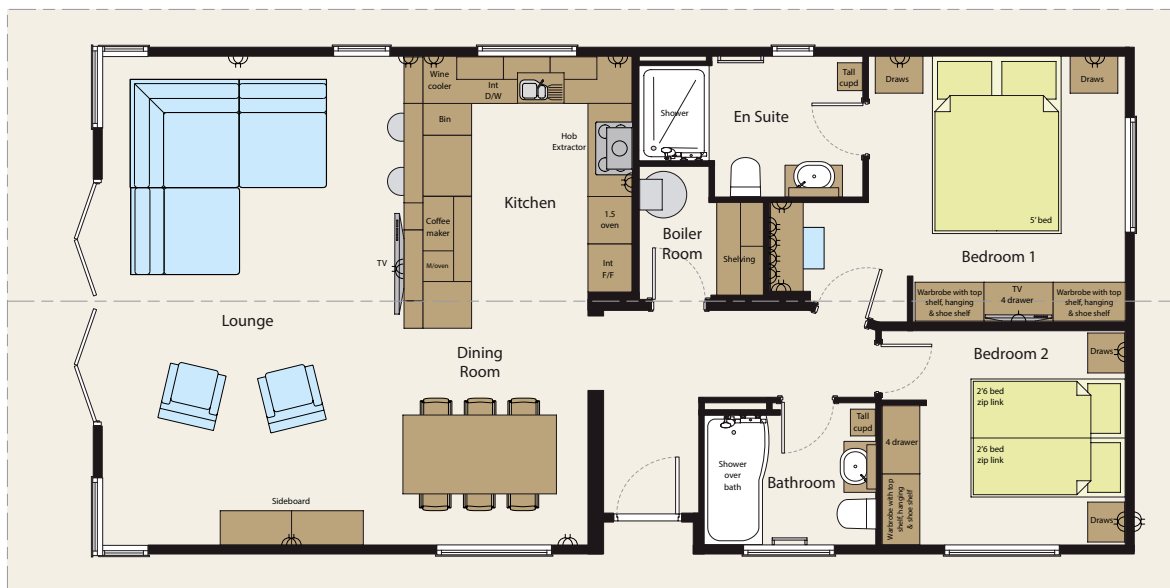
**Lissett  
Homes**

# THE GULLWING

[lissetthomes.com](http://lissetthomes.com)



45 x 22 - 2 bed



Lissett Homes reserves the right to change any materials, fitting etc shown in this brochure at anytime and without prior notice as supply or product development demand. All Lissett Homes are built to BS3632 unless otherwise stated. Photographs may show features that are not standard. This includes props that are used for illustrative purposes. E&OE

Lissett Homes,  
Pocklington Industrial Estate,  
The Airfield, Pocklington,  
York YO42 1NR

Telephone: (01759) 302801  
Facsimile: (01759) 322159  
Email: [info@lissetthomes.com](mailto:info@lissetthomes.com)  
[lissetthomes.com](http://lissetthomes.com)